



## ***Our Story:***

Hot Wireless is a veteran-owned, wireless engineering firm, headquartered in Punta Gorda, Florida. We have focused our energies & skills toward making products that deliver strong, reliable wireless signals of all kinds; cell, Bluetooth, WiFi, etc.

According to CTIA's ([ctia.org](http://ctia.org)) annual wireless industry survey, US wireless subscribers used 96 X more data in 2020 than in 2019 & downloaded 37 trillion megabytes of data (total) in 2020. US wireless subscriptions were up 20 million year over year to 442.5 million subscriptions. Clearly, we rely on wireless communications.

The problems for everyone, caused by weak & inconsistent cell, Bluetooth & wireless signals include difficulties in making & keeping cell phone connections accessing the internet. As well, these problems cause slow, at best, wireless communications of all kinds, between the wireless devices in a typical office, such as between computers & printers, between TV's & routers as well as between gaming consoles & TV's.

These facts provide compelling reasons for our purpose—the reason Hot Wireless designs, develops, manufactures & sells products that boost, help deliver & improve wireless communications for people at home, traveling, while at work & when relaxing.

Hot Wireless manufactures all products in the U.S.A.

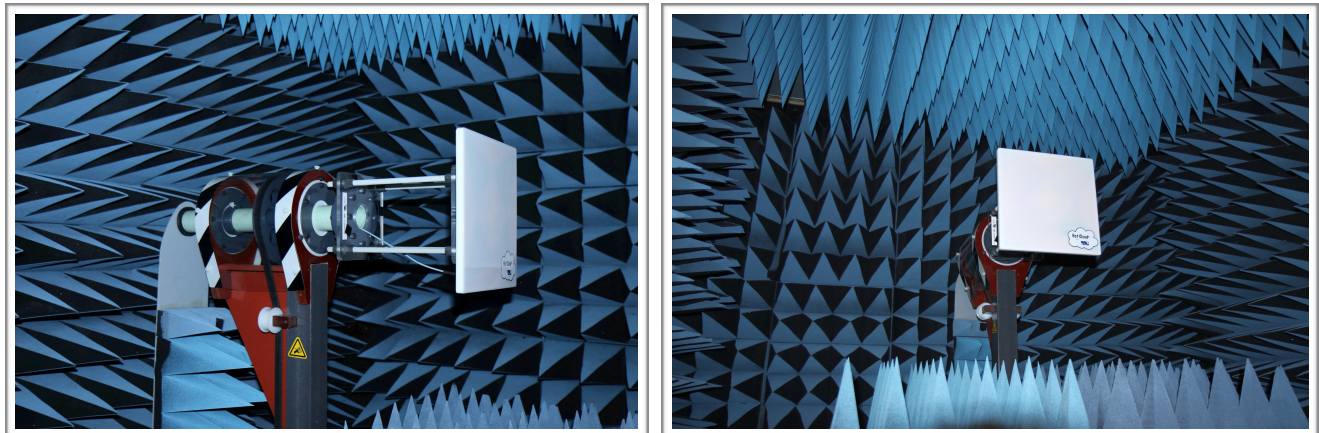
**HOT WIRELESS™**  
**1133 BAL HARBOR BLVD. SUITE 1139 PMB 328 PUNTA GORDA, FL 33950-6574**  
**T. +619.306.3774** **WWW.HOTWIRELESS.NET**

### ***Product Information:***

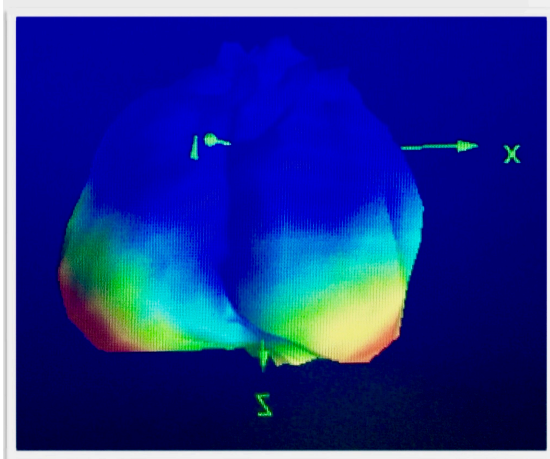
Our first product, the ***Commercial Hot Cloud® Assembly***, was designed & developed to address & alleviate problems caused by weak & inconsistent WiFi & cell phone signal coverage inside the Goldman Sachs headquarters in New York City. Specifically, it was designed to be integrated into commercial ceiling tiles both of metallic & mineral composition, making it invisible on the room side. Request our White Paper @ [info@hotwireless.net](mailto:info@hotwireless.net)

The Hot Cloud® Assembly has been shown in lab tests to provide coverage for 12K square feet & boost signals in the frequency b&s from 750 MHz to 5.8 GHz, covering cell phone & wireless signals of all kinds, including Bluetooth, WiFi & first responders, as well as many other disciplines.

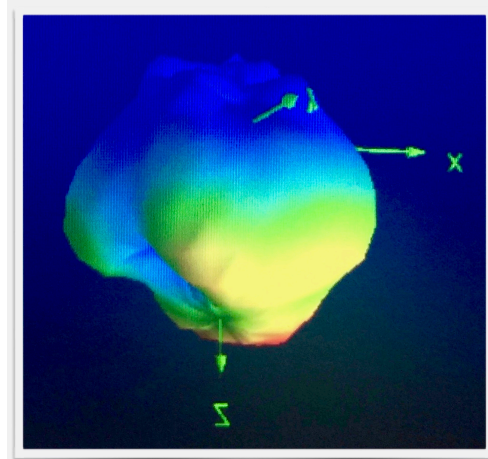
**Photos of the Hot Cloud® under testing in the Antenna Test Lab Company's anechoic Chamber:**



**In the lab tests, above, the Hot Cloud® produced signal clouds, as shown here:**



**WiFi/Bluetooth B& Cloud**



**Cell B& Cloud**

**In use, the Hot Cloud® is mounted at the ceiling level noted as the X-Y plane. The Z axis points to the room side.**

***Target customers for the Commercial Hot Cloud® are architectural & engineering firms, systems integrators, & commercial building managers. Firms that specify, install, operate & manage communications systems for commercial buildings, apartment buildings, shopping centers & malls, hotels, conference centers, hospitals & other buildings or plants. Office or residential complexes whose tenants expect & require ubiquitous availability of reliably strong cell phone & WiFi signals, to live & work effectively. The Hot Cloud® also enhances a spectrum of signals which covers critical first-responder networks.***

### **Typical Commercial Hot Cloud® Installation**





Our engineers followed with the development of the **Hot Cloud® for Home & Small Business**, a logical progression as our target customers for the Hot Cloud® for Home & Small Business are individual home/condo owners & apartment renters as well as small businesses who experience less than ideal cell phone & WiFi signals inside their homes & businesses. The Hot Cloud® for Home & Small Business is delivered in an acrylic case (12.5" x 12.5" x .4") & can be hung from a ceiling, or on a wall, or even placed in a crawl space.



**Hot Wireless's Wearable Hottie® Products** are designed to be worn, carried & used in proximity of cell phones & WiFi/bluetooth devices, including 5G devices!



The Hottie®Xtreme is 3.5" x 5.75", thin & flexible & fits easily in a pocket. It requires no batteries, cables, applications or provider contracts & works with all phones & service providers. In lab tests, the Hottie®Xtreme boosts available cell phone, Bluetooth & WiFi signals up to 300%.

The Hottie®Xtreme 5G is the same size as the Hottie®Xtreme. In lab tests the Hottie®Xtreme 5G boosts available cell, bluetooth & WiFi signals. It requires no batteries, cables, apps or contracts & works with all devices; cell phones, laptops, tablets, smart watches, smart TVs, gaming consoles, etc..



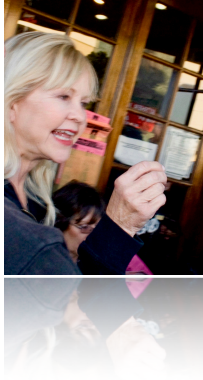
**Target customers** for the Hottie® Xtreme & Hottie®Xtreme 5G are cell phone, Bluetooth, WiFi & 5G users. Especially people who live, work & commute in areas where signals are weak or inconsistent. The Hottie®Xtreme 5G works well in all areas, especially including areas with available 5G signals.

Hot Cloud® & Hottie® are registered trademarks. All Hot Wireless™ technologies are covered by US Utility Patents.

***Our products are Made In The USA, in San Diego County.***

**HOT WIRELESS™**  
**1133 BAL HARBOR BLVD. SUITE 1139 PMB 328 PUNTA GORDA, FL 33950-6574**  
**T. +619.306.3774** **WWW.HOTWIRELESS.NET**

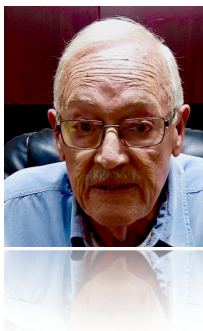
### **Key People in Our Team:**



**Skylar Walker, President,** started her career as a professional ballet dancer in San Francisco & New York. She spent the majority of her career in business & management. Skylar worked as a travel agent & manager of a large corporate travel agency's onsite operation in Washington, DC. Prior to joining Hot Wireless, she was a Corporate Account Manager for business travel clients of a Fortune 500 company & the Global Director of Travel Management for a consulting firm in Washington, DC.



**Mike Walker, VP & CTO,** is the key developer of the technologies that make Hot Wireless' products unique & so extremely useful. Mike is a US Navy veteran of the Vietnam War. His engineering career started in the Navy & includes several phases. In his career, he developed & implemented the wireless controls that operate the West Seattle Bridge; designed & implemented manufacturing lines for such products as battery separators & ball-point pens. Mike started & operated one of the first commercial wireless internet services in Los Angeles. Mike developed the Hot Cloud® initially for a ceiling tile manufacturer's bid on a project in New York City. He then adapted the technology to develop the Hottie® wearable products. He continues to develop products as market-potential develops.



**Bill Yanke, VP of Sales & Marketing,** also a veteran of the Vietnam War, joined Hot Wireless initially as an early adapter & saw the huge market potential for our Hottie® technology. Based in South Florida & often driving across Florida through *alligator alley* Bill began using the Hottie® when it was still in a prototype stage. Now retired from an incredibly successful 30+ year career working for Fortune 500 companies in marketing & sales to the Tier 1 consumer electronics industry. Fortune smiled on Hot Wireless when Bill joined as our VP of Sales & Marketing. He brings a wealth of knowledge, business savvy & high level decision making expertise to Hot Wireless.

**HOT WIRELESS™**

**1133 BAL HARBOR BLVD. SUITE 1139 PMB 328 PUNTA GORDA, FL 33950-6574  
T. +619.306.3774**

**WWW.HOTWIRELESS.NET**

## ***Company Facts:***

We are a veteran-owned,  
LLC registered in Wyoming,  
USA.

Our products are Patented  
& Manufactured In The  
USA.

Hot Wireless currently has  
2 additional product groups  
in development.

HEADQUARTERS  
Punta Gorda, Florida USA

FISCAL YEAR  
January 1 - December 31

INTELLECTUAL PROPERTY  
4 Utility Patents  
3 Trademarks

WEB SITE  
<https://hotwireless.net>

## **Hot Wireless Press Contacts:**

For Technology — CTO, Mike Walker [mwalker@hotwireless.net](mailto:mwalker@hotwireless.net)

For Sales — VP, Bill Yanke [wyanke@hotwireless.net](mailto:wyanke@hotwireless.net)

General Inquiries — President, Skylar Walker [swalker@hotwireless.net](mailto:swalker@hotwireless.net)